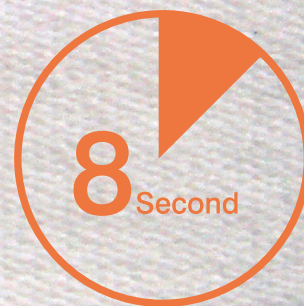


每件只要八秒!

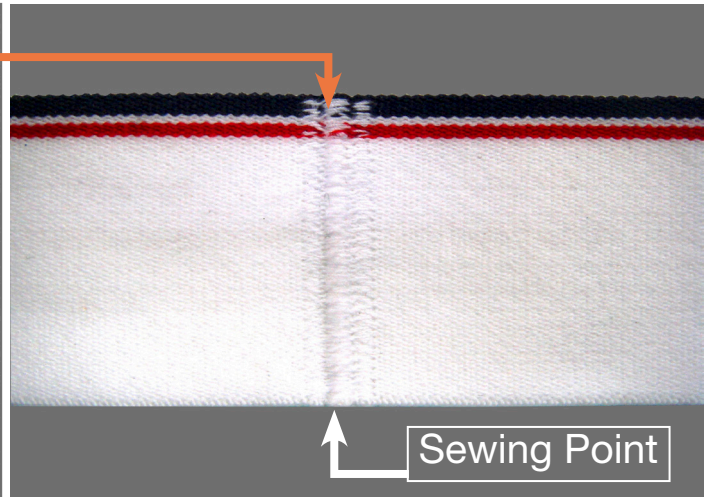


ASP-EBJ100

鬆緊帶搭接

Elastic Band Joining Machine





Specifications

Model	ASP-EBJ100
Machine head	JUKI Computer Controlled Bar-tacking Machine LK-1920
Voltage	200~240V 3-phase 50~60Hz 200~240V 1-phase 50~60Hz (according to customer's requirement)
Air supply	0.5Mpa (5kg / cm ²)
Production Capacity	It depends on the number of the needles. (in case of 190 stitches, 8 second /unit)
Elastic width	20 ~ 50mm
Elastic circumference	300 ~ 1980mm
Finished dimension	

 高林股份有限公司
KAULIN MFG. CO., LTD.

由於對產品的改良及更新，本產品型錄中之產品規格及外觀的修改恕不事先通知！

The specification and/or appearances of the equipment described in this catalogue are subject to change without previous notice because of modification.

 TOP 100
TAIWAN BRANDS

 GOOD DESIGN

 CE

ISO 9001:2000
ISO 14001:2004